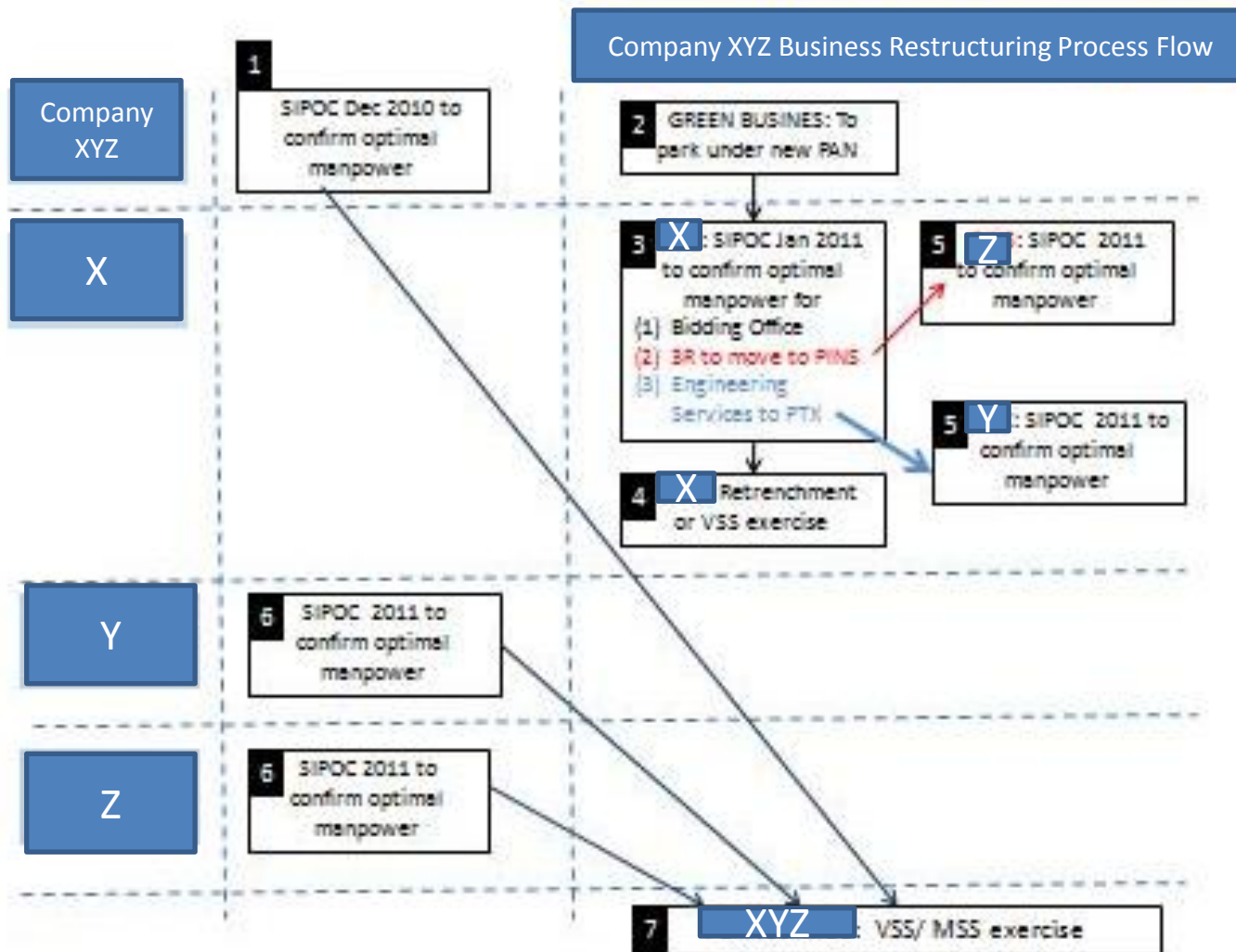

Manpower OPTIMIZATION EXERCISE

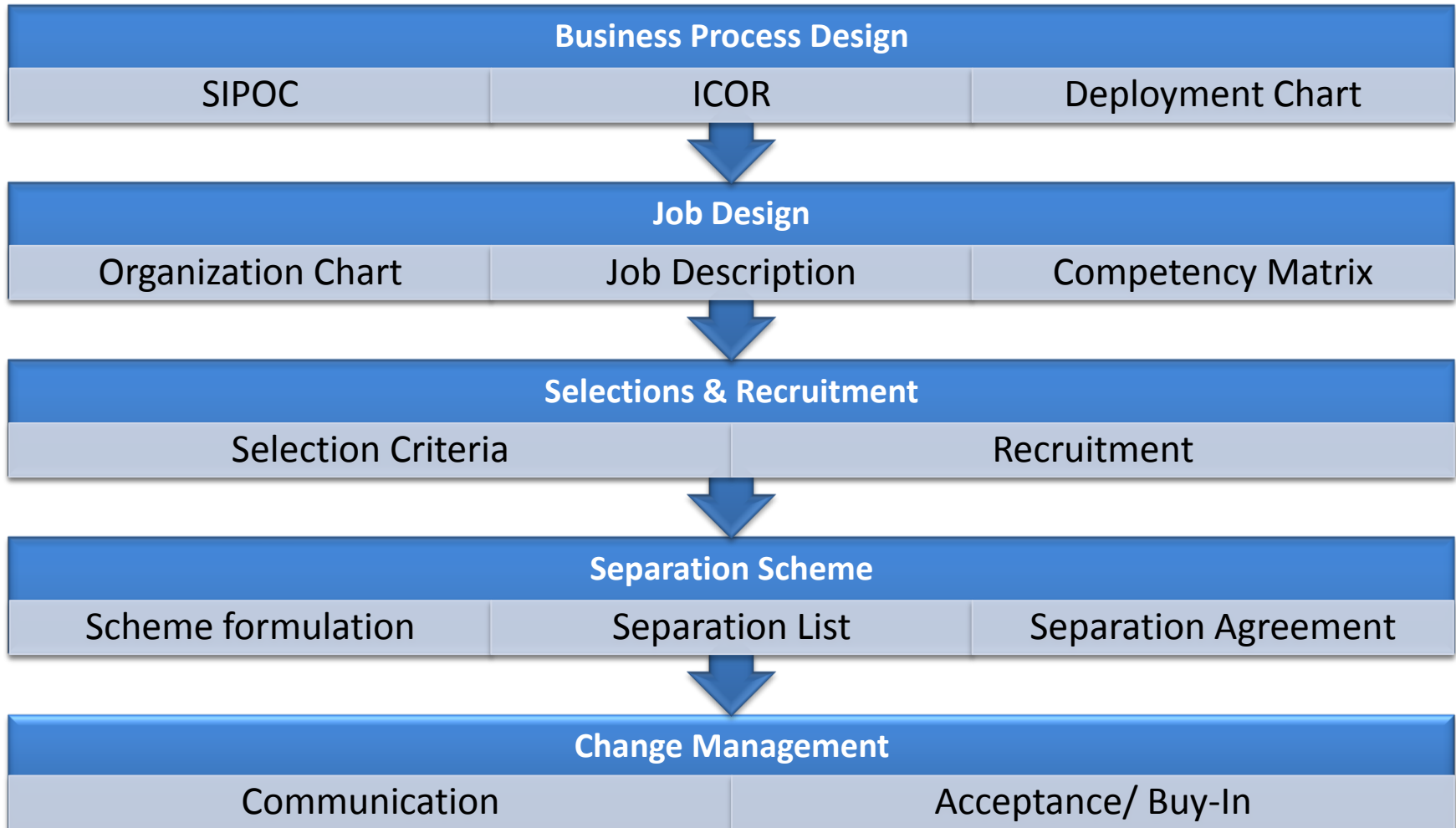
© 2011 Jasmiza Solutions Sdn Bhd

All rights reserved. No part of this document may be reproduced, stored in a retrieval system or transmitted in any form or by any means (electronic, mechanical, photocopying, recording or otherwise) without the permission of the copyright owner.

The company wide restructuring strategy is mapped below:



Project Scope & Methodology used in XYZ Restructuring is as follows:



Project Timeline

Key Activities	Deliverables	Method	Resource
Business Process Design Per Business Units	<ul style="list-style-type: none"> • Activity Map 	<ul style="list-style-type: none"> • Workshop 	<ul style="list-style-type: none"> • SME • Performance Tech
SIPOC Workshop	<ul style="list-style-type: none"> • SIPOC 	<ul style="list-style-type: none"> • Workshop 	<ul style="list-style-type: none"> • SME
Job Design	<ul style="list-style-type: none"> • Org Chart • Job Description • Competency Matrix 	<ul style="list-style-type: none"> • Design • Desktop 	<ul style="list-style-type: none"> • SME • XYZ : Process Owner
Draft			
Challenge Sessions			

THANK YOU